



Resources for Families

Last updated:4/23/2020

Lutheran Social Services of Indiana has developed this list of resources to assist individuals and families during the COVID-19 pandemic. The intent of this list is to provide one central document to use as a reference for possible community assistance and resources. The responses and relevance of the listed organizations could quickly become obsolete due to the fluid nature of COVID-19 crisis and response. As such, your use and our responsibility for this list is subject to the limitations set forth at the end of this list of resources.

For more information or additional COVID-19 resources, visit www.lssin.org/covid19

South Bend:

Tutoring

Bethel University Education Department March 19 at 11:20 PM · Mishawaka, IN ·

We have several students who need to do some eTutoring to get experience working with K12 students -- and we know there are many people out there overwhelmed by the new eLearning format of schools in the era of Coronavirus. Our students are available on a first-come, first-served basis, but we still have candidates who can support junior or senior high school social studies and health. Please email Bryan.Waltz@BethelUniversity.edu to get connected -- and we aren't worried about where the student is from...so, feel free to pass this on <https://medium.com/gopeer/students-from-harvard-mit-uc-berkeley-give-free-tutoring-to-k-12-students-229cff0e3464>

Food Delivery

Youth Service Bureau's Street Outreach Program staff are delivering non-perishable food to youth 21 and under, or provide curbside pickup. YSB's Young Moms' Self-Sufficiency Program has partnered with South Bend School Corp. to deliver food Monday – Friday to all YSB's Young Moms clients. To refer a client to the Young Moms' program, please call 574-235-9231. Participants must be pregnant or parenting between the ages 16 – 24. Fathers who are between the ages of 16-24 are also welcome to join the program. All participants must reside in St. Joseph County.

Uber eats is doing free delivery for all food. <https://www.uber.com/newsroom/food-not-finances/>

South Bend Community School locations

Grab-and-Go meals will be provided to every student from 11 a.m. to 1 p.m. at 10 school sites Monday through Friday and 10 rotating bus locations Monday through Thursday. Kennedy Academy will provide meals 2 p.m. - 4 p.m. only. [See map.](#)

School distribution sites

Brown Community Learning Center - 737 Beale St., South Bend, IN, 46616

Coquillard Elementary - 1245 N Sheridan St., South Bend, IN, 46628

Darden Elementary - 18645 Janet St., South Bend, IN 46637

Harrison Elementary - 3302 W Western Ave., South Bend, IN 46619

Kennedy Academy - 609 N. Olive St., South Bend, IN 46628

Lincoln Elementary - 1425 E Calvert St., South Bend, IN 46613

Marquette Montessori Academy - 1818 Bergan St., South Bend, IN 46628

Muessel Elementary - 1021 Blaine Ave., South Bend, IN 46616

Monroe Elementary - 312 Donmoyer Ave., South Bend, IN 46614



Resources for Families

Last updated:4/23/2020

Madison STEAM Elementary - 832 N Lafayette Blvd., South Bend, IN 46601
Nuner Fine Arts Academy - 2716 Pleasant St., South Bend, IN 46615
Tarkington Elementary - 3414 Hepler Rd., South Bend, IN 46635

Bus distribution sites

Monday and Wednesday

Charles Black Center, 3419 W. Washington St., South Bend, IN 46619
LaSalle Intermediate Academy, 2701 W. Elwood Ave., South Bend, IN 46628
Miami Hills Apartments, 3534 High St., South Bend, IN 46614
Monroe Circle, 526 W Western Ave., South Bend, IN 46601
Prairie Apartments, 2630 Prairie Ave., South Bend, IN 46614

Tuesday and Thursday

Countryside Village, 1001 S. Mayflower Rd, South Bend, IN 46619
Indian Springs Apartments, 2609 Bow Ct., South Bend, IN 46628
Prosper South Bend, 3001 E. Jefferson Blvd., South Bend, IN 46615
Rum Village Park, 2626 S. Gertrude St., South Bend, IN 46614
St. Adalbert Catholic Church, 2505 W Grace St, South Bend, IN 46619

Cultivate Distribution Plan during Corona Crisis

South Bend Community School – At least 750 frozen meals will be taken to Madison Elementary on Fridays who is sharing them with 4-5 other elementary schools which we know include Mussel Elementary & Munroe Elementary. The school is providing the students breakfast and lunch and Cultivate is the dinner. Backpacks aren't required because students will be taking them home from school immediately after receiving them. These meals are delivered by Cultivate to Madison Steam Academy every Friday.

Success Academy – At least 300 meals will be delivered to Success Academy on a weekly basis. Cultivate delivers these meals to the school and parents can pick up these meals at a designated time by the school.

Wa-Nee Community Schools – At least 450 meals will be delivered weekly to Wa-Nee students. Wa-Nee plans to deliver to the same students in the weekend backpack program 6 meals every weekend by bus. Students at Nappanee Elementary, Wakarusa Elementary and Woodview Elementary. Several weeks of meals are delivered by Cultivate to Family Christian Development Center in Nappanee who is our distribution partner in that community.

Plymouth Community Schools – At least 600 meals will be delivered weekly to Plymouth Community Schools. Several weeks of meals are delivered to the Center at Donaldson (Ancilla College) who is our food distribution partner in Marshall County. Plymouth Community Schools distributes the 600 meals to the students at their four elementary schools: Jefferson, Webster, Washington Discovery and Menominee.

Elkhart Community Schools - At least 900 meals will be delivered weekly to Elkhart Community Schools. Several weeks of meals are delivered to the Church Community Services (CCS) who is our food distribution partner in Elkhart. CCS will deliver our meals on a weekly basis to the same students and the same five Elkhart Community Elementary Schools which are Beardsley Elementary, Bristol Elementary, Roosevelt Steam Academy and Woodland Elementary.

SCAN Community Partners

general website: www.scaninc.org

referrals: www.scaninc.org/referrals



Resources for Families

Last updated:4/23/2020

South Bend Continue:

Mental Health:

My Strength – Can start with app or sign up on website;

App: My Strength; code oaklawncommunity

Weblinks: <https://www.sjccares.org/mystrength-for-schools-families> (no code needed)

<https://oaklawn.org/schoolstrength/> (no code needed)

More information: Dory.lawrence@oaklawn.org

Intro video: <https://bh.mystrength.com/mystrengthintro>

Parent Café Pilot: Tuesday, April 21, 3:30 – 5:00 p.m.; Email rebecca.zakowski@oaklawn.org to participate (if you signed up during the meeting, Becky will contact you)

Livingworks Start: 1-hour online suicide prevention program teaching how to recognize when someone is thinking about suicide and connect them to help and support. Information: <https://www.livingworks.net/start> Link for course (\$5 will be donated back to SJC Cares):

<https://shopusa.livingworks.net/discount/T-39725?redirect=%2Fproducts%2Flivingworks-start>

Zoom Suicide Survivors Group: Suicide Prevention Center of UHS, last Tuesday of the month, 6:30 p.m. (April 28) – email Kent Laudeman: klaudeman@uhs-in.org ; more info on Suicide Prevention Center's FB page

Recovery:

Online AA & NA Meetings (from AARC's FB Page)

https://drugfree.org/parent-blog/covid-19-online-and-remote-resources-for-addiction-support/?utm_source=facebook&utm_medium=post&utm_campaign=covid-19-we-are-here-for-you&utm_content=covid-19&fbclid=IwAR02vzwWfciNMBWnrnjcARaYwjSFg89Y3_rnR27yKNUmihTuUgCJZmX077Co

email: Sharon Burden, sharonburden@aarinfo.org

Plymouth:

Temporary Computer Labs

What: Three computer labs have been set up around the Plymouth area

Why: To provide free computer and wi-fi access to those needing to file for unemployment and other social services.

Where: The Plymouth Public Library – 201 N. Center St., Plymouth

David's Courage – 10924 Lincolnway East, Plymouth

The Monastery of the Martyrs – 1000 S. Michigan St. Plymouth

How: To schedule a time to use the computer lab call (574)342-9040

CALL: (574) 342-9040

to make a reservation to use one of the computers

Resources for Families

Last updated:4/23/2020

Peru:

Food:

Peru Community Schools:

Peru Community Schools will be serving free Lunch and Dinner to Go, for all Peru Community Children/Students, from March 16th - April 3rd. Location: Front Driveway of Peru High School (Drive-Thru Pickup).
Monday – Friday Lunch: 11:30 am - 12:30 pm Dinner: 3:30 pm – 5:30pm

Area Five – Rochester Indiana

ANNOUNCEMENT!

AREA FIVE MEAL SITES
starting Tuesday, March 17th through April 3rd

- Logan Senior Center → 🍴 CARRY OUT MEALS ONLY
- Cass County Council on Aging → 🍴 CARRY OUT MEALS ONLY
- Rochester Senior Center → 🚫 CLOSED
- Akron → 🚫 CLOSED
- Friendship Haven → 🚫 OPEN
- Kokomo Senior Center → 🍴 CARRY OUT MEALS ONLY
- Mexico → 🍴 CARRY OUT MEALS ONLY
- Miami Senior Center → 🍴 CARRY OUT MEALS ONLY
- Encore Senior Center → 🍴 CARRY OUT MEALS ONLY
- Wabash Senior Center → 🍴 CARRY OUT MEALS ONLY
- Warvel Park → 🍴 CARRY OUT MEALS ONLY

Methodist church in Bunker Hill has a food pantry. 765 689 9595 They will set time for the person to meet them that day and give them food.

Mental Health Tips:

Help with anxiety – Grounding Techniques

- Find five things that you can **see**
- Four things that you can **touch**
- Three things that you can **hear**
- Two things that you can **smell**
- One that you can **taste**

This technique can help when you feel that you have lost all control of your surroundings.

If someone is in need of mental health services, there are many ways to contact further assistance:

To schedule an intake via telephone services currently (765) 472-1244 and select option 2 (This is the Peru Four County Office, but can connect you throughout our agency.)

In crisis situations these numbers are available 24/7

Four County Hotline: 1-800-552-3106

Crisis Text line: Text IN to 741-741

National Hotline 1-800-273-8255

For information on substance abuse related services reach out to Jae Miller 574-721-3345. I will be continuing to gather further information as to how Four County is currently providing these services to the community.



Resources for Families

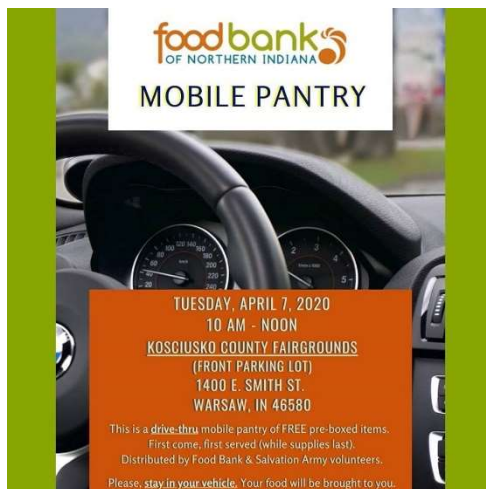
Last updated:4/23/2020

EastPointe Bible Church

If there is a need for Christian counseling, I am also keeping regular counseling appointments by phone, Google Duo, FaceTime, and Skype.

Phil Bunce, Pastor of Counseling and Administration
EastPointe Bible Church
PO Box 1192, 1540 East Paw Paw Pike
Peru, IN 46970
765-473-4004 ext. 3

Kosciusko County:



The food bank and SalvationArmy volunteers will be distributing a free food box for those in need at the Kosciusko Fairgrounds (front parking lot) on April 7th from 10 AM - NOON. It's first come, first served (while supplies last). This is a drive-thru pantry. Please, stay in your car and the food will be brought to you. Thank you!

Duke Energy:

Since many customers may be facing unusual financial hardships as a result of COVID-19, we are suspending disconnections for nonpayment effective March 13, 2020. This applies to all home and business accounts in Florida, Indiana, Kentucky, North Carolina, Ohio and South Carolina. Have questions about you Duke Energy Bill: contact 1-800-521-2232



Resources for Families

Last updated:4/23/2020

Warsaw Community Schools:

Registration will re-open each week at 5:00 p.m. Monday and close each Thursday at 5:00 p.m. Please check back during these times to reserve meals beginning the following Monday. Once you are registered you do not need to register again.

Please email mfranks@warsawschools.org if you wish to be put in touch with local organizations to assist your family further. For more information <https://wcsfoodandnutrition.org>

Free meals for kids
NOTICE!

Beginning Monday, April 6th
All elementary school and neighborhood meal sites closed

NEW! 1 DAY - 1 LOCATION - 5 DAYS OF MEALS

Help us keep our staff and your family safe.
Receive 5 days of meals per child at one location on one day.
No walk-ups, must remain in vehicles, no exceptions.
Door to door delivery will be 5 Meals on Mondays only.

2:00 - 4:00 p.m.
LAKEVIEW MIDDLE SCHOOL
(Behind School)
Must present picture ID

REGISTRATION REQUIRED

Registration will re-open each week at 5:00 p.m. Monday and close each Thursday at 5:00 p.m. Please check back during these times to reserve meals beginning the following Monday. Once you are registered you do not need to register again.

Please email mfranks@warsawschools.org if you wish to be put in touch with local organizations to assist your family further.

5-Day Meal Pickup Registration
Door to Door Delivery English

Limitation of Liability

If you utilize this resource page by utilizing any listed resource (other than services directly provided by Lutheran Social Services, Inc., ["LSSI"]) you understand and agree that LSSI, including any affiliate or subsidiary of LSSI (collectively "LSSI") is not responsible for the statements, terms, conditions, directives, guidelines or recommendations (collectively "Content") of any third party resource provider. You understand and agree that the applicability and relevance of any Content may quickly become obsolete and inapplicable due to the fluid nature of the effort to combat the coronavirus pandemic. It is your responsibility to determine the relevance, suitability, implementation and impact of any resource provider recommendation, plan, program, course of action or benefit directly with the resource provider. As such, you, for yourself, your spouse, heirs, successors and assigns agree to release, indemnify and hold LSSI harmless from and against any and all claims, costs, expenses, damages and liabilities (including attorney fees) arising out of or in any manner relating to the use of any listed resource and/or resource provider for any purpose whatsoever.